



# the event



Flooring created for every step you take...™

Step onto the Centiva Event Series that combines a variety of natural looks that are durable and easily maintained under heavy traffic. With a wide selection of wood and stone patterns, this series is not only affordable but emulates natural flooring products.

# Event

13 Styles • 87 Colors

FOR EXTRA HEAVY COMMERCIAL USE

## Sandstone

12" x 18"



HY SD51-E FR  
Light Stone



HY SD52-E FR  
Dark Stone

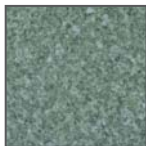


HY SD53-E FR  
Gray Stone

### STANDARD SIZES

Tiles 18" x 18" Sandstone 12" x 18"  
Planks 4" x 36" Urban Loft 12" x 36"

## Paradiso



PD 2703-E SN  
Lily Pad



PD 2705-E SN  
Luna Pearl

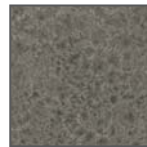


PD 2701-E SN  
Amber Waves

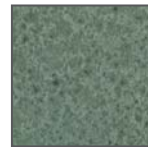
## DesertDune



HY DD46-E JS  
Navajo Bead



HY DD45-E JS  
Dapple Gray



HY DD42-E JS  
Turquoise



HY DD43-E JS  
Saddle Brown



HY DD41-E JS  
Adobe



HY DD44-E JS  
Sienna

## Urban Loft

12" x 36"



UL 4102-E SN  
City Scope



UL 4106-E SN  
Early Morning

UL 4104-E SN  
Solitude

Actual color, shade, and textured effect may vary slightly from samples shown. Samples are cut from standard tiles and may not correspond to the pattern of the entire tile. Images shown are not to scale.

## Terra



ST 2506-E JS  
Tawny



ST 2508-E JS  
Moccasin



ST 2509-E JS  
Mesa



ST 2504-E JS  
Acorn



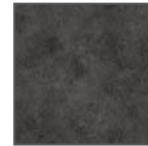
ST 2511-E JS  
Sea Star



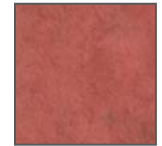
ST 2523-E JS  
Goldenrod



ST 2510-E JS  
Winter Cloud



ST 2513-E JS  
Midnight



ST 2529-E JS  
Berry



ST 2501-E JS  
Old Prairie



ST 2539-E JS  
Baja Blue



ST 2533-E JS  
Plum

## Good Ole Woods



HY GW41-E RU Red Pecan \*



HY GW40-E RU Chocolate Pecan \*



HY GW19-E TK Antique Ochre



HY GW29-E TK Antique Cimarron



HY GW32-E RU Stained Pecan \*



HY GW34-E RU Harvest Pecan \*



HY GW36-E RU Natural Pecan \*



HY GW38-E TK Antique Walnut



HY GW33-E FR Honey Birch



HY GW35-E FR Mellow Birch



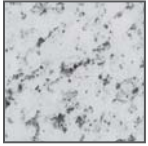
HY GW37-E FR Spiced Birch



HY GW39-E TK Antique Oak



## Granito



GR 2902-E SN  
Imperial White



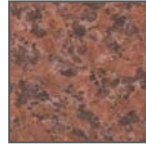
GR 2904-E SN  
Black Galaxy



GR 2906-E SN  
Balmoral Green



GR 2908-E SN  
Darwin Brown



GR 2910-E SN  
Battersea Red

## SURFACE TEXTURES KEY

- FR = Frost
- JS = Granite
- RK = Rock
- RU = Rustic Wood
- SN = Satin
- TK = Wood Tick

## RiverRock



HY RR70-E RK  
Feather



HY RR65-E RK  
Tucson Gray



HY RR62-E RK  
Coronado



HY RR63-E RK  
Indian Twilight



HY RR69-E RK  
Arroyo



HY RR68-E RK  
Ciudad



HY RR67-E RK  
Cherokee



HY RR61-E RK  
Cortez Gold



HY RR64-E RK  
Sacred Rock

## STANDARD EDGE TREATMENT

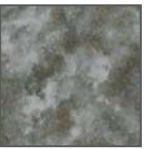
Square Edge (SE)

Slight (SB) or  
Deep Bevel (DB) also  
available upon request.

## Fire & Ice



FI 1402-E SN  
Aqua



FI 1403-E SN  
Ice



FI 1401-E SN  
Fire

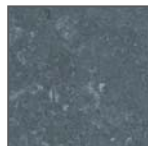
## Plaza



ST 2620-E FR  
Diamond Gray



ST 2630-E FR  
Mountain Mist



ST 2634-E FR  
Deco



ST 2805-E FR  
Stonewall



ST 2801-E FR  
Verde



ST 2624-E FR  
Grain



ST 2602-E FR  
Country Lane



ST 2640-E FR  
Espresso



ST 2626-E FR  
Mesquite



ST 2803-E FR  
Spring Dust

## Olivet Woods



HY OL03-E TK Cinnamon



HY OL05-E TK Allspice



HY OL07-E TK Nutmeg

## Bamboo



HY BB29-E FR Light Bamboo



HY BB30-E FR Dark Bamboo



HY BB28-E FR Aged Bamboo

## Ultraplank



UP 1104-E TK Northern Pear



UP 1108-E TK Bradford Pear



UP 1112-E TK Cherry



UP 1113-E RU Rosewood



UP 1125-E RU German Oak



UP 1126-E TK Red Elm \*



UP 1127-E TK Smoked Elm \*



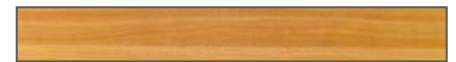
UP 1128-E TK White Elm \*



UP 1129-E TK Weathered Elm \*



UP 1131-E RU Rose Anigre



UP 1133-E RU Light Anigre



UP 1135-E RU Mint Anigre



UP 1141-E TK Pale Cherry



UP 1171-E TK Traditional Oak



UP 1173-E TK Cabin Oak

\* Product includes vivid design variation within full pattern.

## PRODUCT CHARACTERISTICS

<b>Classification:</b>	ASTM F 1700-04 Class III Solid Vinyl Tile
<b>Overall Thickness:</b>	.120" / 3 mm (nominal)
<b>Construction:</b>	Heterogeneous, resilient flooring with a .030" high density wearlayer
<b>Packaging:</b>	45 sq. ft. per carton
<b>Recycling:</b>	Suitable
<b>Edge Treatment:</b>	Square Edge (SE) All Event products will be produced in Square Edge and surface texture stated in this brochure. Also, available in Deep Bevel (DB) and Slight Bevel (SB). Please ask for more information.
<b>Sizes Available:</b>	All Event tiles except Sandstone and Urban Loft are 18" x 18". Standard size for Sandstone is 12" x 18" and the standard size for Urban Loft is 12" x 36". All Event planks are 4" x 36".

## ARCHITECTURAL SPECIFICATION

Guide: All floors shown or listed in this specification shall be Centiva Event Series by International Floors of America, Inc., Florence, AL, 35630.

Specific product shall be:                                                   in size     " x     " (Use this 11 character code to define style, color number, series, surface texture and edge treatment.)  
Style      Color      Series      Surface      Edge

The Centiva Event Series shall be heterogeneous, resilient flooring with a .030" high density wearlayer. All products shall have an overall gauge of .120" (3 mm) nominal. See individual product specification for sizes offered in each line. The resilient tile shall be manufactured in accordance with ASTM Specification F-1700 04, and shall be asbestos free. All products shall have a limited 20-year commercial warranty against manufacturing defects. The adhesive shall be D-2001 (wet-set), PS-5000 (pressure sensitive), or EP 2000 (epoxy). Installation shall be in accordance with the latest Centiva Installation Guidelines.

For information on installation and maintenance, contact our Technical Service Department at 800-633-3380 or visit our website at [www.centiva.com](http://www.centiva.com).

## TEST PERFORMANCE

ASTM E 648-04	Critical Radiant Flux: Class I CRF>0.45
ASTM E 662-03	Smoke Density: <450
ASTM F 925-02	Chemical Reaction: Excellent
Slip Resistance:	All products are ADA Compliant. Results vary with Surface Texture. FTC Slip Resistant Classified Product

It is recommended that all Event square tiles be installed tessellated or in one direction.

Additional sizes, surface textures, and edge treatments are available upon request. Ask your Centiva consultant for more information.

## WARRANTY

Centiva provides a Commercial 20 year Limited Wear Warranty and a Residential Lifetime Limited Wear Warranty on all products. For complete warranty information, please visit [www.centiva.com](http://www.centiva.com).

Contact BRUMARK for additional sales, installation and technical information.

## BRUMARK

2020 Airport Industrial Park Drive  
Marietta, Georgia 30060  
(770) 933-9030  
(800) 291-9606  
fax (770) 933-9809  
or e-mail us at [websales@brumark.com](mailto:websales@brumark.com)



[www.brumark.com](http://www.brumark.com)

Centiva looks at all our business practices for ways to work in harmony with nature. Reduce, Recycle, and Reuse are guidelines for our staff to follow. Our reduction of waste, our increase in the use of recycled and reused materials are basic tenets in this philosophy. All areas of environmental friendliness are explored resulting in responsible environmental policies, programs, and products.

Centiva's policy is one of continuous development and improvement and the right is reserved to add or delete from the series or to change patterns without prior notice. All designs, marks, and names have copyright protection.

